



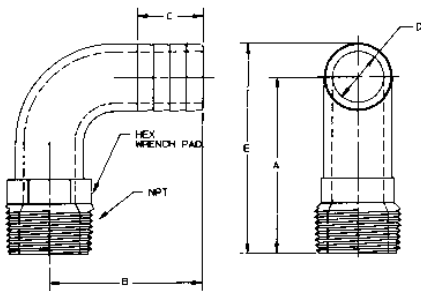
## 65-907 - 90 Degree Pipe To Hose Adapter



### Overview

One-piece adapter simplifies right angle connections. Cast with wrench flats for easy installation; 85-5-5-5 bronze. Some sizes also available in British Threads (BSP). Available in pipe sizes 1/2" to 4".

### Dimensions



Number	NPT in./mm.	Hose Size	Hex	A		B		C		D		E		WT/100	
				in./mm.	in./mm.	in./mm.	in./mm.	in./mm.	in./mm.	in./mm.	in./mm.	lb./kg.	lb./kg.		
65-907-50	1/2 15	1/2" or 5/8"	5/8"	1.750 44.450	1.910 48.514	1.280 32.512	0.280 7.112	2.080 52.832	35 15.876						
65-907-51	3/4 20	3/4"	7/8"	2.500 63.500	2.250 57.150	1.130 28.702	0.540 13.716	2.920 74.168	41 18.597						
65-907-52*	1 25	1"	1 1/8"	2.720 69.088	2.350 59.690	1.000 25.400	0.800 20.320	3.240 82.296	67 30.391						
65-907-53*	1-1/4 32	1 1/4"	1 3/8"	3.110 78.994	2.660 67.564	1.250 31.750	1.030 26.162	3.750 95.250	106 48.081						
65-907-54*	1-1/2 40	1 1/2"	1 5/8"	3.440 87.376	3.110 78.994	1.250 31.750	1.280 32.512	4.200 106.680	130 58.967						
65-907-55*	2 50	2"	2 1/8"	3.990 101.346	3.990 101.346	1.500 38.100	1.630 41.402	5.000 127.000	260 117.934						
65-907-56*	2-1/2 65	2 1/2"	2 5/8"	4.715 119.761	4.740 120.396	2.000 50.800	2.150 54.610	5.920 150.368	395 179.169						
65-907-57*	3 80	3"	3 1/8"	5.880 149.352	5.880 149.352	2.100 53.340	2.630 66.802	7.440 188.976	655 297.103						
65-907-58	4 100	4"	4 1/8"	5.800 147.320	6.700 170.180	3.500 88.900	3.500 88.900	7.700 195.580	1310 594.206						

\*Also available in British threads (BSP)

