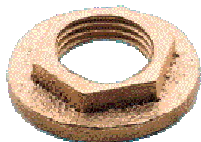




## Bronze Flange Nuts

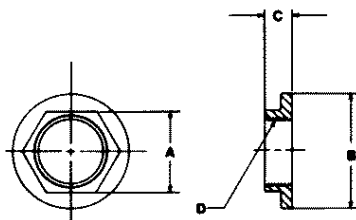


### Overview

#### Plain Bronze Finish Only.

Designed and built with large surface to distribute load, for longer service life and more reliable connections; 85-5-5-5 bronze. Available in pipe sizes 1/2" - 4". Some sizes also available in British Threads (BSP).

### Dimensions



Number	Size	A	B	C	E (Tapping)	WT/100
	in./mm.	in./mm.	in./mm.	in./mm.		lb./kg.
65-007-65	1/2 15	1.000 25.400	1.500 38.100	0.312 7.925	1/2" NPSM	13.8 6.260
65-006-38	3/4 20	1.250 31.750	1.840 46.736	0.406 10.312	3/4" NPSM	13.8 6.260
65-006-39*	1 25	1.560 39.624	2.150 54.610	0.468 11.887	1/2" NPSM	21.2 9.616
65-006-40*	1-1/4 32	1.900 48.260	2.590 65.786	0.500 12.700	3/4" NPSM	33 14.969
65-006-41*	1-1/2 40	2.160 54.864	2.900 73.660	0.500 12.700	1" NPSM	40 18.144
65-006-42*	2 50	2.590 65.786	3.310 84.074	0.593 15.062	1 1/4" NPSM	66 29.937
65-006-43*	2-1/2 65	3.160 80.264	3.900 99.060	0.625 15.875	1 1/2" NPSM	83.5 37.875
65-007-66*	3 80	4.150 105.410	5.530 140.462	0.687 17.450	2" NPSM	101 45.813
65-007-67	4 100	5.310 134.874	6.980 177.292	1.000 25.400	2 1/4" NPSM	366 166.015

\*Also available in British threads (BSP)



GENERAL  
Marine  
SERVICES

156 Beaumont Street · Westhaven · Auckland · New Zealand

Sales Ph +64 9 309 0048 · sales@generalmarine.co.nz

Service Ph +64 9 368 0938 · service@generalmarine.co.nz

[www.generalmarine.co.nz](http://www.generalmarine.co.nz)