



SOUND SIGNALING EQUIPMENT AIR HORNS

MODEL D-OA AIR HORN

THE KAHLENBERG D-OA MARINE AIR HORN IS IMO CERTIFIED FOR BOATS UP TO 65 FEET (20 METERS) IN LENGTH.

AS WITH ALL KAHLENBERG AIR HORNS FOR PLEASURE CRAFT, THE D-OA HAS BEEN DEVELOPED TO MAXIMIZE AUDIBILITY, WITH A RICHNESS OF TONE BASED ON MUSICAL INSTRUMENT DESIGN. CONSTRUCTED ENTIRELY OF BRONZE AND BRASS IT IS BUILT FOR A LIFETIME OF SERVICE.



TECHNICAL DETAILS

Frequency: 322 & 254 Hz

S.P.L. Output: 133 dB (A) @ 1 Meter

Air Consumption: 17.6 C.F.M., 8.3 l/s

Operating Pressure: 50 to 200 p.s.i. (3.5 to 14 bar)

Electric Power: 12 or 24 Volt D.C. (Compressor)

Material: Bronze and Cast Brass

Net Weight: 9 lbs., 4 kg

Finish: Kahlenberg Chrome Plate Finish,
TGIC Sky White Powdercoat,
Unfinished Brass

Certification: ABS, NMMA Certified A-23

FEATURES AND BENEFITS OF THE D-OA AIR HORN INCLUDE:

- ✦ Output exceeds other horns of similar size.
- ✦ Made entirely of brass with bronze diaphragm:
(Function of the horn guaranteed for as long as you own it.)
- ✦ Low air consumption:
Allows for use of a very small compressor/tank kit
as compared to other air horns.
- ✦ Easy Installation: Compact Compressor Pump, Fittings,
and tubing are supplied, (see P449-17 and P449-18
Compressor Systems and V-69-K Valve Kit.)

KAHLENBERG INDUSTRIES, INC.
1700 12TH STREET, P.O. BOX 358
TWO RIVERS, WI 54241 U.S.A.

WWW.KAHLENBERG.COM



GENERAL
Marine
SERVICES

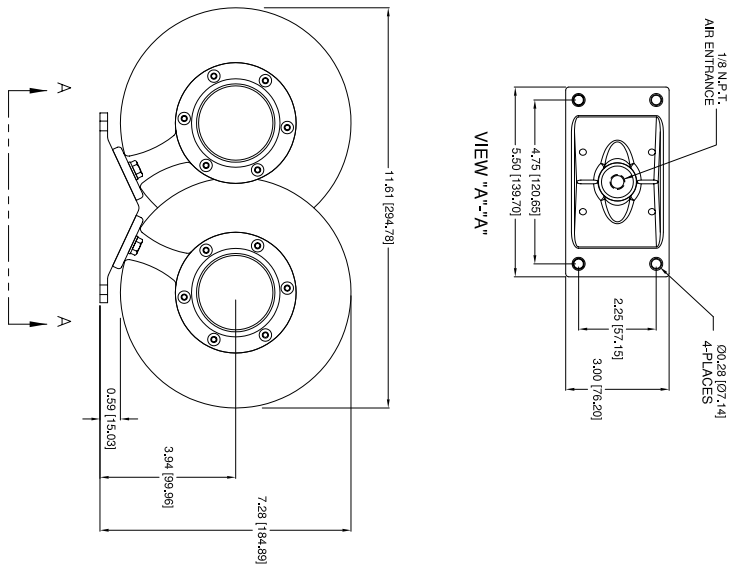
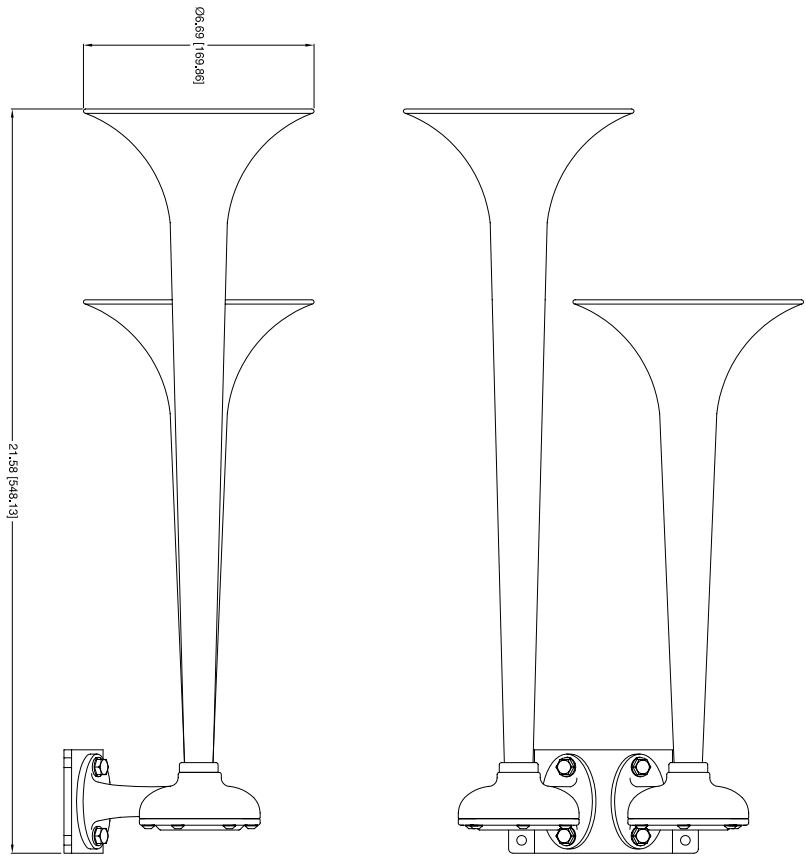
156 Beaumont Street · Westhaven · Auckland · New Zealand

Sales Ph +64 9 309 0048 · sales@generalmarine.co.nz

Service Ph +64 9 368 0938 · service@generalmarine.co.nz

www.generalmarine.co.nz

Conforming to International Maritime Regulations
For Vessels Less Than 20 Meters in Length



REV.	BY	DATE	DESCRIPTION	APP'D.
A	ZJN	03/02/11	REVISED WITH UPDATED BODY/STANDS & COVERS	EMK

TECHNICAL DATA
Frequency: 322 Hz & 254 Hz
Sound Pressure Level (1/3 octave at 1 meter): 122.5 dB
Sound Pressure Level (dB(A) @ 1 meter): 133.0 dB
Air Consumption: 17.6 C.F.M. @ 100 P.S.I.
Air Pressure Req: 50 to 200 P.S.I.
Electric Power: N/A
Material: Spun Brass and Cast Bronze
Net Weight: 9.00 Lbs.
Shipping Weight: 14 Lbs.

CONFIDENTIAL
INFORMATION CONTAINED HEREIN IS CONFIDENTIAL. IT IS THE PROPERTY OF KALEBERG INDUSTRIES INC. IT IS TO BE USED SOLELY FOR THE PURPOSES PROVIDED AND NOT TO BE REPRODUCED OR TRANSMITTED IN ANY FORM OR BY ANY MEANS WITHOUT THE PRIOR WRITTEN CONSENT OF KALEBERG INDUSTRIES INCORPORATED.
© Copyright Kaleberg Inc. Inc. 2010

Kaleberg
KALEBERG INDUSTRIES INC. TWO RIVERS, WISCONSIN 54481
OUTLINE DIMENSIONS
D-0A AIRHORN

DR.	DATE	CKD.	SCALE	DRWG. NO.	REV.
ZJN	03/02/11	EMK	N.T.S.	3-6237	A



GENERAL
Marine
SERVICES

156 Beaumont Street • Westhaven • Auckland • New Zealand

Sales Ph +64 9 309 0048 • sales@generalmarine.co.nz

Service Ph +64 9 368 0938 • service@generalmarine.co.nz

www.generalmarine.co.nz