



Chimetone Air Horns

Model KDT-123 Yacht Horn

Kahlenberg Chimetone Air Horns all utilize more than one projector or "trumpet" in their design. These projectors each produce a different fundamental frequency which combine to produce powerful, distinctive, musical chords. To hear a Chimetone Air Horn is to realize that the sound of a vessel can be one of its most impressive aspects. The Model KDT-123 Air Horn is designed for the most discriminating yachtsman. It is made entirely of bronze and brass, and is available in triple chrome plate or a variety of other optional finishes.



TECHNICAL DATA

Fundamental Frequencies: 142 to 416 Hz
S.P.L. (1/3 Octave @ 1 Meter): 134 dB

Air Consumption:
91 C.F.M. @ 100 p.s.i., 43 l/s @ 10 bar

Air Pressure Required:
100 to 250 p.s.i., 7 to 17 bar
(Higher pressures with optional regulators)

Electrical Power Required:
Any standard A.C. or D.C. Voltage

Material: Cast Bronze, Spun Brass

Net Weight: 110 lbs., 50 kg.

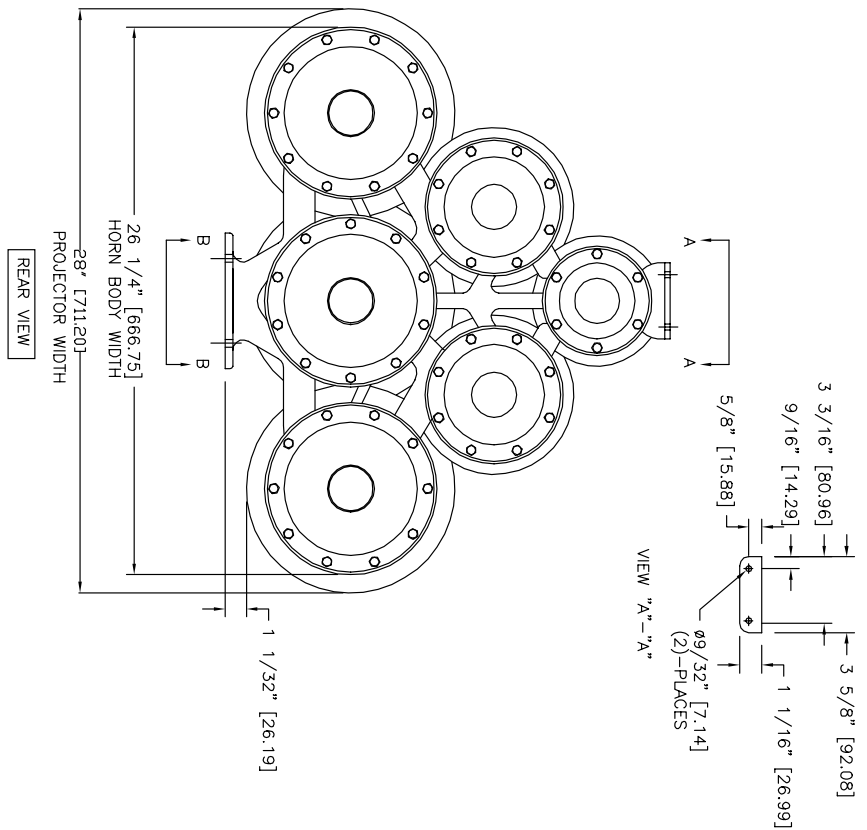
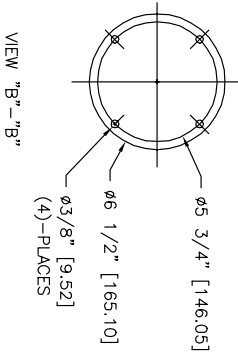
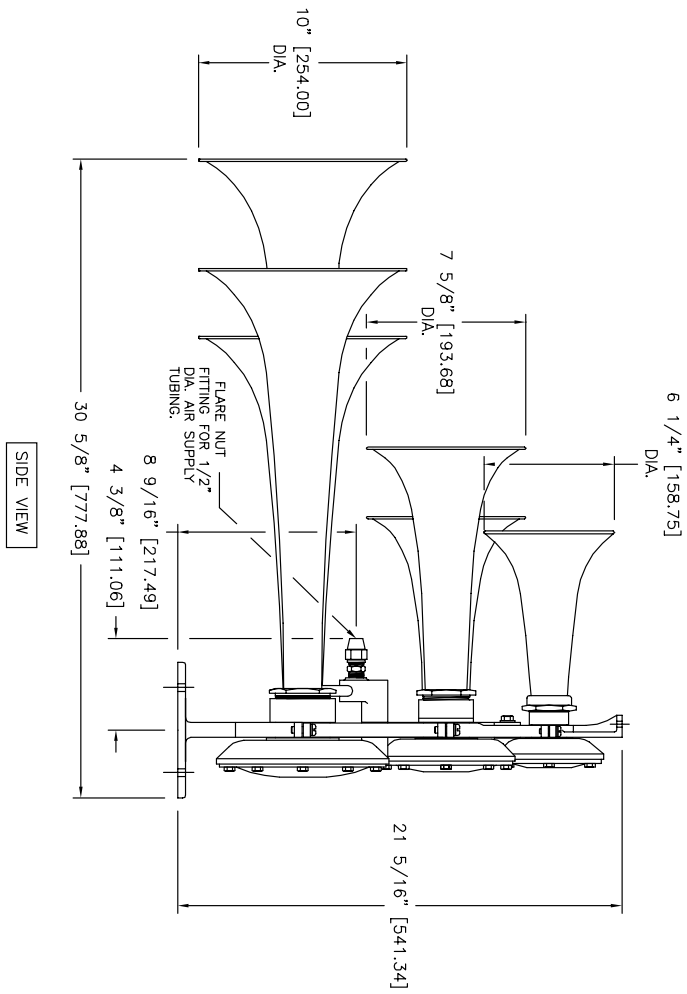
Finish:
Kahlenberg Chrome Plate, TGIC Sky White Powdercoat, Gold or Black Chrome PVD

Dimensions:
30.75" x 28" x 21.5" (781x711x546)
(dimensions without optional light)

- **REQUIRES NO TUNING OR ADJUSTMENT FOR PRESSURES UP TO 250 P.S.I.**
- **BRONZE AND SPUN BRASS, TRIPLE CHROME PLATED OR WHITE POWDERCOAT**
- **HIGHLY RELIABLE, SIMPLE MECHANICAL DESIGN**
- **MEETS OR EXCEEDS IMO/SOLAS REQUIREMENTS**



*Conforming to International Maritime Regulations
For Vessels Under 75 Meters in Length.*



TECHNICAL DATA
 Frequency: 142 Hz, 164 Hz, 208 Hz, 284 Hz,
 349 Hz, & 416 Hz
 Sound Pressure Level (dB(A) at 1 meter): 140db
 Sound Pressure Level (1/3 octave at 1 meter): 134db
 Air Consumption: appx. 135.6 C.F.M. @ 150 P.S.I.
 Air Pressure Req: 100 To 250 P.S.I.
 Electric Power: N/A
 Material: Spun Brass & Cast Bronze
 Net Weight: 110 Lbs.
 Shipping Weight: 219 Lbs.

Price: \$ _____ U.S.D. Net. Ea.
 (Valid for 60 days, F.O.B. Two Rivers, WI. U.S.A.)

Kahlenberg's

KAHLENBERG BROS. CO. TWO RIVERS, WI. U.S.A.

**OUTLINE DIMENSIONS
 MODEL KDT-123
 6 TRUMPET AIRHORN**

DATE	DRWG. NO.	REV.
07/25/96	3-5683	B EMK



**GENERAL
 Marine
 SERVICES**

156 Beaumont Street · Westhaven · Auckland · New Zealand
 Sales Ph +64 9 309 0048 · sales@generalmarine.co.nz
 Service Ph +64 9 368 0938 · service@generalmarine.co.nz

www.generalmarine.co.nz