



## Chimetone Air Horns

### Model T-3A Yacht Horn

Kahlenberg Chimetone Air Horns all utilize more than one projector or "trumpet" in their design. These projectors each produce a different fundamental frequency which combine to produce powerful, distinctive, musical chords. To hear a Chimetone Air Horn is to realize that the sound of a vessel can be one of its most impressive aspects. The Model T-3A Air Horn is designed for the most discriminating yachtsman. It is made entirely of bronze and brass, and is available in triple chrome plate or a variety of other finishes.



- **FOR VESSELS LESS THAN 75 METERS IN LENGTH**
- **MEETS OR EXCEEDS IMO REQUIREMENTS**
- **LOW AIR CONSUMPTION, OPERATES ON A WIDE RANGE OF AIR PRESSURE**
- **HIGHLY RELIABLE, VIRTUALLY NO MAINTENANCE**
- **OPTIONAL DIRECTLY MANIFOLDED MANUAL/SOLENOID VALVES, AIR STRAINER**

#### TECHNICAL DATA

Fundamental Frequency: 311, 261, and 208 Hz

S.P.L. : (1/3 Octave @ 1 Meter): 135 dB

Air Consumption:

52 C.F.M. @ 100 p.s.i., 25 l/s @ 7 bar

Air Pressure Required:

100 to 250 p.s.i., 7 to 17 bar  
(Higher pressures with optional regulators)

Electrical Power Required:

Any standard A.C. or D.C. Voltage

Material: Cast Bronze and Spun Brass

Net Weight: 75 lbs., 34 kg.

Finishes:

Kahlenberg Chrome Plate, TGIC Sky White Powdercoat, Gold or Black Chrome PVD

Dimensions:

21.25" x 18.5" x 19" (540x470x483)  
(dimensions without optional light)



GENERAL  
*Marine*  
SERVICES

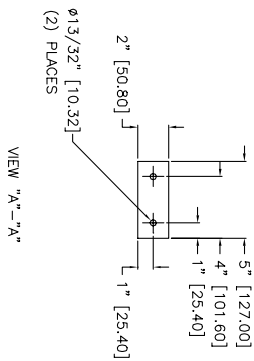
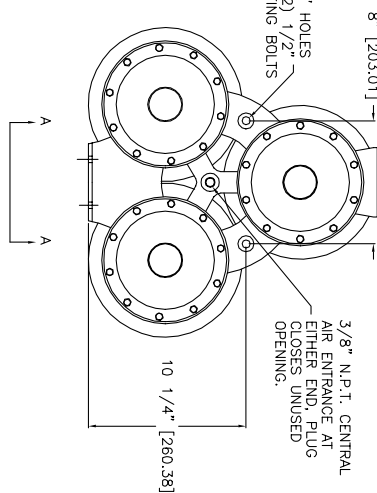
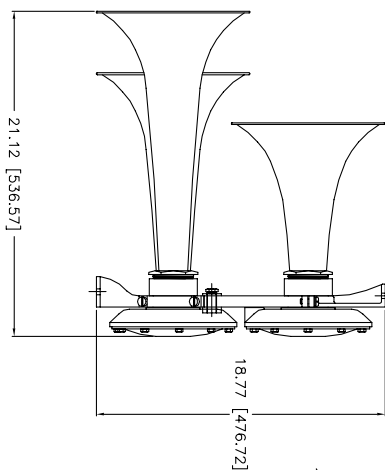
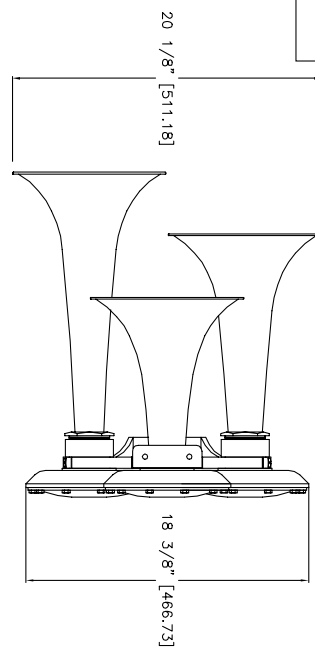
156 Beaumont Street · Westhaven · Auckland · New Zealand

Sales Ph +64 9 309 0048 · sales@generalmarine.co.nz

Service Ph +64 9 368 0938 · service@generalmarine.co.nz

[www.generalmarine.co.nz](http://www.generalmarine.co.nz)

*Conforming to International Maritime Regulations  
For Vessels Less Than 75 Meters in Length.*



**TECHNICAL DATA**  
Frequency: 208, 261, 311 Hz  
Sound Pressure Level (1/3 octave at 1 meter): 142.2dB  
Sound Pressure Level (dB(A) at 1 meter): 135dB  
Air Consumption: approx. 78 C.F.M. @ 150 P.S.I.  
Air Pressure Req: 100 To 250 P.S.I.  
Electric Power: Any Standard A.C. or D.C. voltage  
Material: Spun Brass & Cast Bronze  
Net Weight: 75 Lbs.  
Shipping Weight: 132 Lbs.

Price: \$ U.S.D. Net. Ea.  
(Valid for 60 days, F.O.B. Two Rivers, WI. U.S.A.)

**Kahlenberg**  
KAHLENBERG BROS. CO. TWO RIVERS, WI. U.S.A.  
**OUTLINE DIMENSIONS  
MODEL T-3A, FIG. 313  
AIRHORN**

DATE	DRWG. NO.	REV.
04/12/01	3-5446	A EMK



**GENERAL  
Marine  
SERVICES**

156 Beaumont Street • Westhaven • Auckland • New Zealand  
Sales Ph +64 9 309 0048 • sales@generalmarine.co.nz  
Service Ph +64 9 368 0938 • service@generalmarine.co.nz

[www.generalmarine.co.nz](http://www.generalmarine.co.nz)