

MarQ® 15 Telescopic—

- 1500 LBS (680 KG) lift capacity.
- *Tender-Lift* system (drumless hydraulic winch).
- Smooth, nearly silent 21' (6.4 M) cable travel.
- Telescopes hydraulically under full load.
- Hydraulic boom elevation.
- Full lift capacity at all boom angles.
- 180° hydraulic rotation standard.
- Optional 270° or 359° rotation.
- Completely waterproof, low voltage, hand-held remote control system.
- Available with your choice of standpipe mount, cylindrical base, or pyramid base.
- Full proportional control of all hydraulic functions with the standard supplied hydraulic power unit.
- Painted to match the yacht.
- Includes 20' (6.1 M) of hose and control wire measured from the bottom of the standpipe to the remote-mounted power unit (longer runs available where required).
- Hydraulic power unit:
 - Full proportional control -
 - 5 HP piston pump - 2.5 GPM.
 - 220 VAC, 50/60 HZ, 1 PHASE, 30 AMP (3 PHASE optional)
 - 23½" high x 17½" wide x 28½" long (60 x 45 x 71 CM)
 - Alternate HPU's available for special applications.

Lift Height and Reach with the Telescopic Section Retracted—

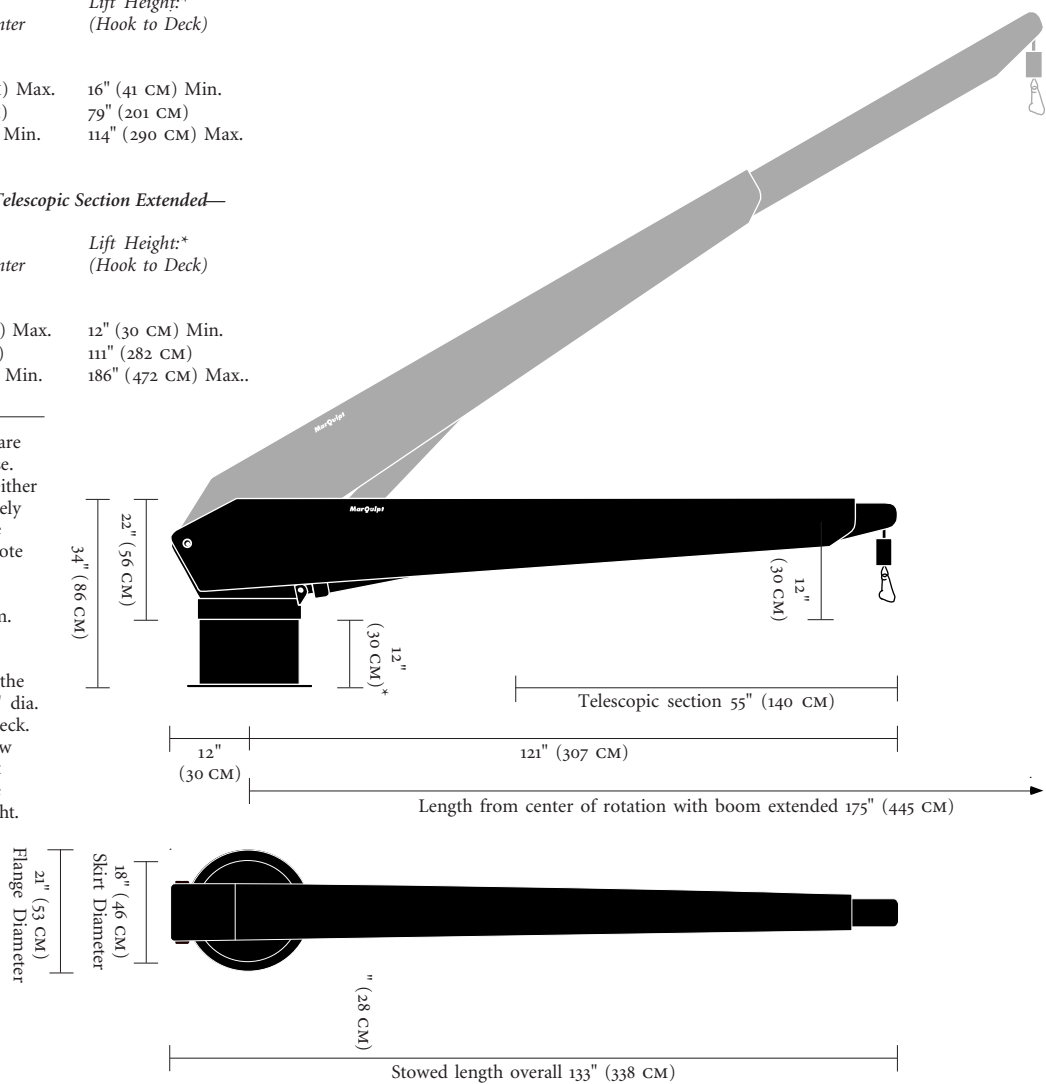
Boom Angle:	Reach: (Hook to Center of Rotation)	Lift Height:* (Hook to Deck)
0° Min.	120" (305 CM) Max.	16" (41 CM) Min.
30°	102" (259 CM)	79" (201 CM)
65° Max.	45" (114 CM) Min.	114" (290 CM) Max.

Lift Height and Reach with the Telescopic Section Extended—

Boom Angle:	Reach: (Hook to Center of Rotation)	Lift Height:* (Hook to Deck)
0° Min.	175" (445 CM) Max.	12" (30 CM) Min.
30°	150" (381 CM)	111" (282 CM)
65° Max.	69" (175 CM) Min.	186" (472 CM) Max..

* Lift heights in the tables above are measured with a cylindrical base. The hydraulic power unit can either be located in the base or remotely mounted in the yacht. The base shown at the right assumes remote mounting. To accommodate the hydraulic power unit, the base would extend beneath the boom.

For a standpipe base, add 5" to the height measurement. The 6-5/8" dia. pipe goes through to the next deck. The minimum pipe length below deck is 72". A standpipe mount requires remote mounting of the Hydraulic Power Unit in the yacht.



Quality-Built
Marine Equipment

3100 Southwest Tenth Street
Pompano Beach, Florida 33069
United States of America

TEL • (954) 957-8333
FAX • (954) 957-8330
WEB • www.marquipt.com
EMAIL • sales@marquipt.com

MarQuipt

10/08

-please contact us for overseas representatives-



GENERAL
Marine
SERVICES

156 Beaumont Street · Westhaven · Auckland · New Zealand
Sales Ph +64 9 309 0048 · sales@generalmarine.co.nz
Service Ph +64 9 368 0938 · service@generalmarine.co.nz

www.generalmarine.co.nz