

# Tender-Lift® 2,500—

- 2,500 LBS (1,125 KG) lift capacity.
- *Tender-Lift* system (drumless hydraulic winch).
- Smooth, nearly silent 26' (8 M) of cable travel.
- Full proportional control of all hydraulic functions.

- Full lift capacity at all boom angles.
- 270° hydraulic rotation standard.
- 360° rotation available.
- Completely waterproof, low voltage, hand-held remote control system.
- Cylindrical base, pyramid base or standpipe mounting options.

- Finished to match your yacht.
- Custom designs and lengths available.
- Includes 20' (6.1 M) of hose and control wire measured from the bottom of the standpipe to the remote-mounted power unit (longer runs available where required).

- Hydraulic power unit:  
*Full proportional control -*
  - 5 HP piston pump - 2.5 GPM.
  - 220 VAC, 50/60 HZ, 1 PHASE, 30 AMP (3 PHASE optional)
  - 23½" high x 17½" wide x 28½" long (60 x 45 x 71 CM)
- Alternate HPU's available for special applications.

## Boom Operating Angles 0-67°—

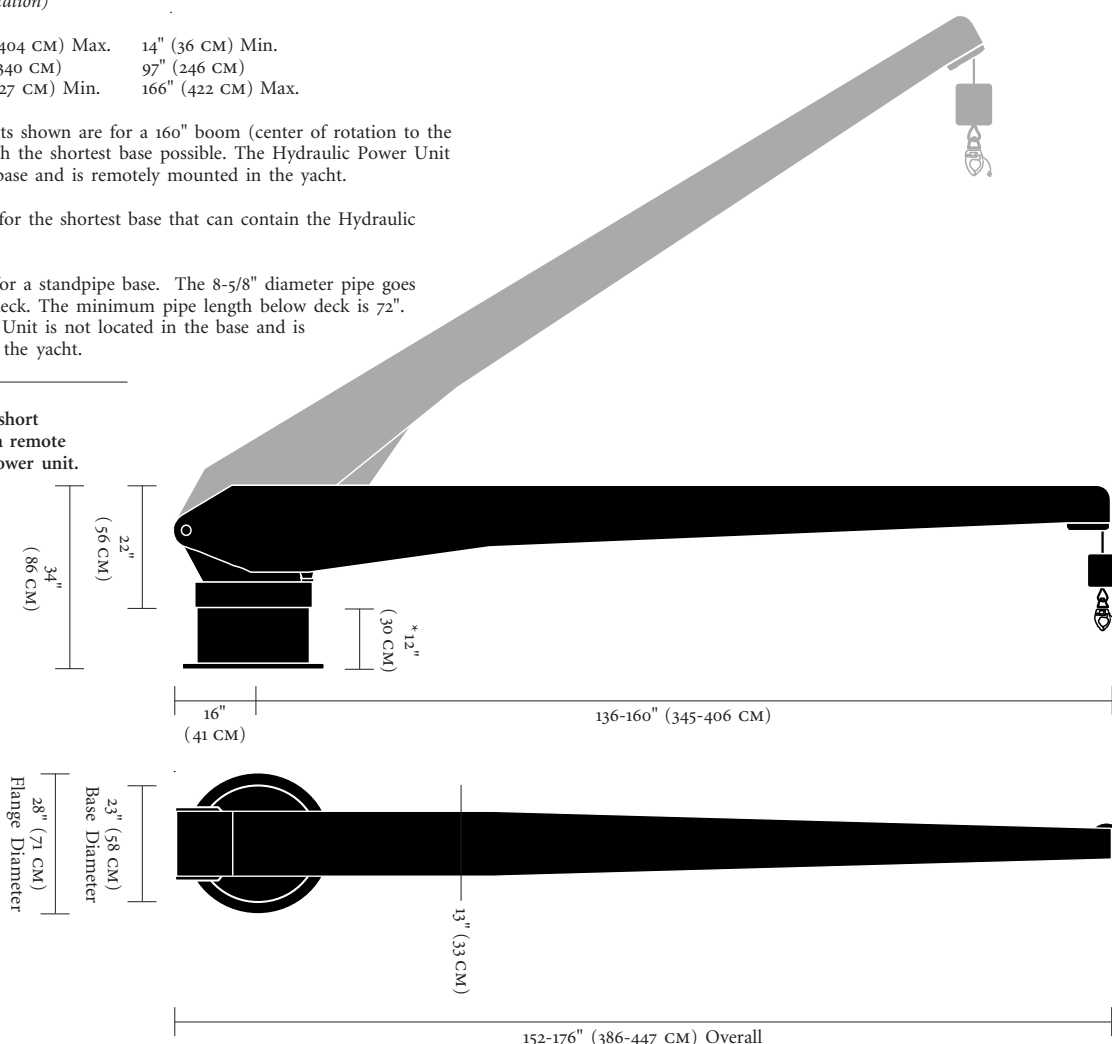
Boom Angle:	Reach: <sup>*</sup> 160" Boom Length (Hook to Center of Rotation)	Lift Height: <sup>*</sup> 160" Boom Length (Hook to Deck)
0° Min.	159" (404 CM) Max.	14" (36 CM) Min.
30°	134" (340 CM)	97" (246 CM)
67° Max.	50" (127 CM) Min.	166" (422 CM) Max.

<sup>\*</sup>Reaches and lift heights shown are for a 160" boom (center of rotation to the end of the boom) with the shortest base possible. The Hydraulic Power Unit is not located in the base and is remotely mounted in the yacht.

Add 13" of lift height for the shortest base that can contain the Hydraulic Power Unit.

Add 5" of lift height for a standpipe base. The 8-5/8" diameter pipe goes through to the next deck. The minimum pipe length below deck is 72". The Hydraulic Power Unit is not located in the base and is remotely mounted in the yacht.

*Right:*  
*Tender-Lift 2500 on a short cylindrical base with a remote mounted hydraulic power unit.*



Quality-Built  
Marine Equipment

01/04

3100 Southwest Tenth Street  
Pompano Beach, Florida 33069  
United States of America

-please contact us for overseas representatives-

TEL • (954) 957-8333  
FAX • (954) 957-8330  
WEB • [www.marquipt.com](http://www.marquipt.com)  
EMAIL • [sales@marquipt.com](mailto:sales@marquipt.com)

**MarQuipt**



GENERAL  
*Marine*  
SERVICES

156 Beaumont Street • Westhaven • Auckland • New Zealand

Sales Ph +64 9 309 0048 • [sales@generalmarine.co.nz](mailto:sales@generalmarine.co.nz)  
Service Ph +64 9 368 0938 • [service@generalmarine.co.nz](mailto:service@generalmarine.co.nz)

[www.generalmarine.co.nz](http://www.generalmarine.co.nz)

3100 S.W. 10TH ST. POMPANO BEACH, FL. 33089  
FL. (954) 957-8333 / FAX (954) 957-8330

DRAWING: TENDER LIFT 2500

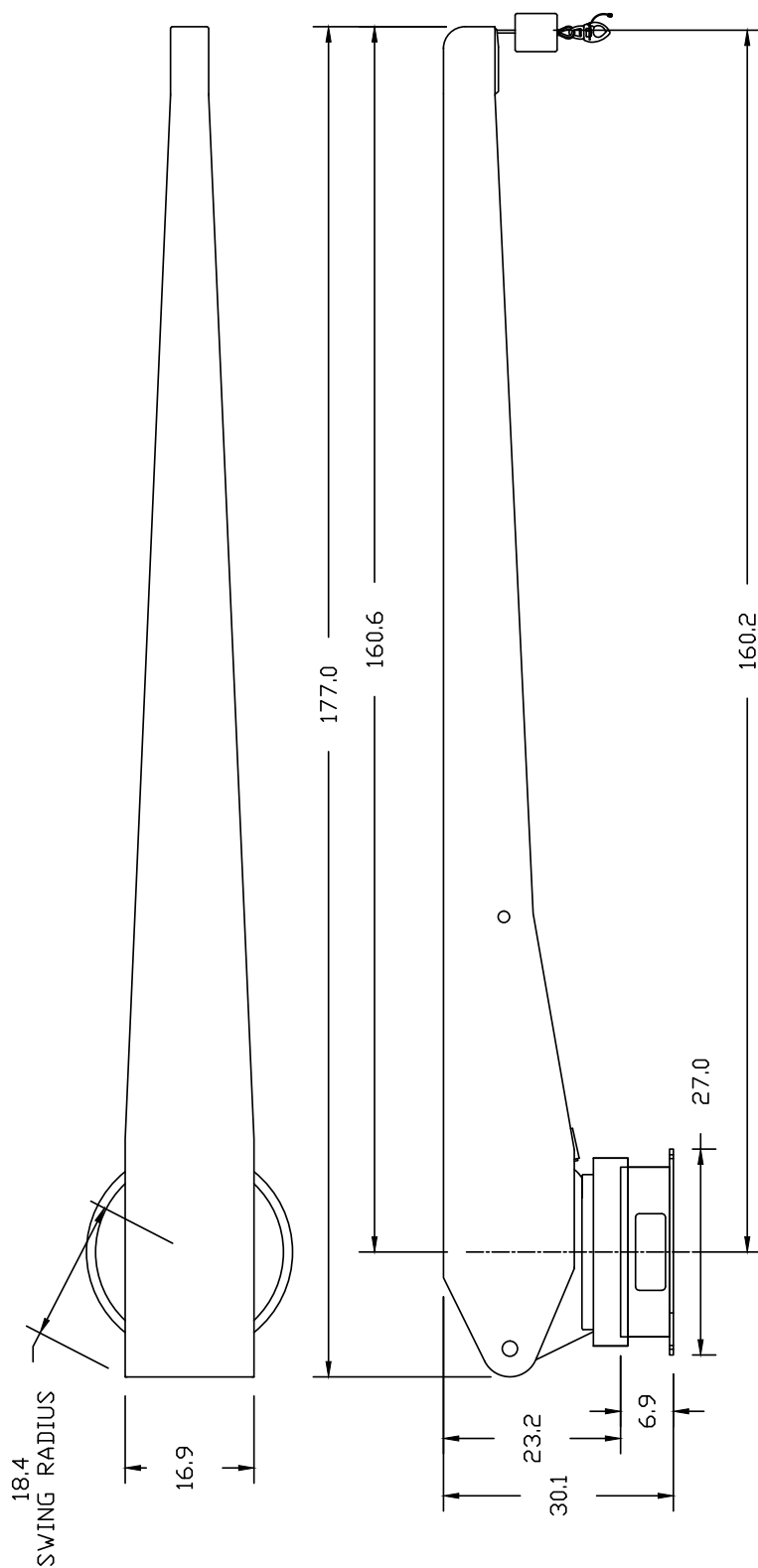
PROJECT:	SALES STD	PAGE:	1	OF	1
DATE:	10/19/18	DRAWN BY:	TIM S		

DATE: 10/19/18  
 PATH: ///TL2500 GB PINION

COPYRIGHT 1995

**Manotype**

This drawing is to be used solely for work authorized in writing. All rights of design are reserved. Reproduction or unauthorized use of this drawing is forbidden and will be considered an infringement of these rights. Drawing is to be returned upon completion of authorized work.



RATED FOR 2500LBS  
STANDARD BOOM LENGTHS FROM 136-180  
STD CABLE TRAVEL=26 FT  
MAX BOOM ELEVATION ANGLE=67°  
MIN REACH FOR 160 BOOM SHOWN=51" @ 67°  
NORMAL ROTATION=348.5 DEGREES



GENERAL  
*Marine*  
SERVICES

**Sales** Ph +64 9 309 0048 · [sales@generalmarine.co.nz](mailto:sales@generalmarine.co.nz)  
**Service** Ph +64 9 368 0938 · [service@generalmarine.co.nz](mailto:service@generalmarine.co.nz)

**[www.generalmarine.co.nz](http://www.generalmarine.co.nz)**