

RPB Type C Installation Overview

The following is a brief description of the installation procedures associated with the Type C rudder port/bearing. Installation instructions are included with each unit and should be followed closely.

1. Insert the Type-C into the tube. Using the hole pattern in the flange of the unit as a template, drill thruholes in the tube flange for mounting.
2. Remove the unit and prepare the tube for bonding by wiping the inside clean of any dust or construction debris.
3. Using a medium-bodied, filled epoxy or Chock fast®, coat the barrel of the Type-C. In addition, lay a bead of marine sealant (such as Lifecaulk™ or 3M™ 101) under the flange at the top of the Type C barrel.
4. Insert the Type-C into the tube and secure in position using appropriately-sized SS hex head bolts. Do not undersize hardware. Use flat and lock washers as necessary.

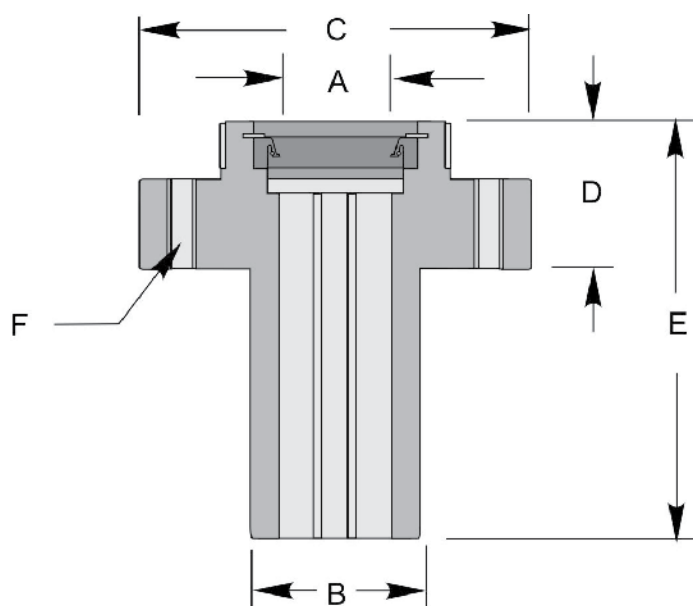
NOTE: Before installing the rudder, insert the red installation hat into the lip seal. When rudder is in place, remove, invert and replace it on top of the Type C unit to keep debris off the lip seal during use.



To determine which part to order, measure the exact diameter of your rudder stock (.000") and the inside diameter of the rudder tube into which it will be mounted. Be sure that the ID of the tube is round, so that the barrel of the Type C will slide in easily (without force).

If necessary, Tides will machine the barrel of the Type C to ensure a proper fit within the tube. Using the rudder stock size and tube ID measurement, locate your part in the table. Next, confirm that the tube flange is of sufficient size to accept the bolt pattern and diameter of the flange (Column C). Make certain your existing rudder tube is long enough to encase the entire Type C within its shape.

Finally, refer to Column E in the table to make sure there is sufficient space over the top of the existing rudder tube to install this Type C bearing.



Type C

Specifications (dimensions in inches)

RUDDER STOCK OD	TUBE ID	DIAMETER	FLANGE HEIGHT	TOTAL HEIGHT	# OF BOLTS IN FLANGE	PART NUMBER
A	B	C	D	E	F	
1	2 1/2	5	1 7/8	4 7/8	6	RPB-C-1000
1 1/4	2 1/2	5	1 7/8	4 7/8	6	RPB-C-1250
1 1/2	3	6	1 7/8	5 7/8	6	RPB-C-1500
1 3/4	3	6	1 7/8	5 7/8	6	RPB-C-1750
2	3 1/2	6 1/2	2 1/8	7 1/8	6	RPB-C-2000
2 1/4	3 1/2	6 1/2	2 1/8	7 1/8	6	RPB-C-2250
2 1/2	4	6 1/2	2 1/8	7 1/8	6	RPB-C-2500
2 3/4	4	7	2 1/8	7 1/8	6	RPB-C-2750
3	4 1/2	7	2 1/8	7 1/8	6	RPB-C-3000
3 1/2	5	8	2 1/4	8	8	RPB-C-3500
4	5 1/2	8 1/2	2 1/4	8 3/4	8	RPB-C-4000
4 1/2	6	9	2 3/8	9 7/8	8	RPB-C-4500
5	6 1/2	9 1/2	2 3/8	10 3/8	8	RPB-C-5000
5 1/2	7	10 1/2	2 3/8	11 3/8	8	RPB-C-5500
6	7 1/2	11	2 3/8	12 3/8	8	RPB-C-6000

If you are replacing a standard part (ex: RPB-C-1000), please specify its size/configurations when ordering because there are numerous variations for the same shaft size. You may not have the standard model.

