



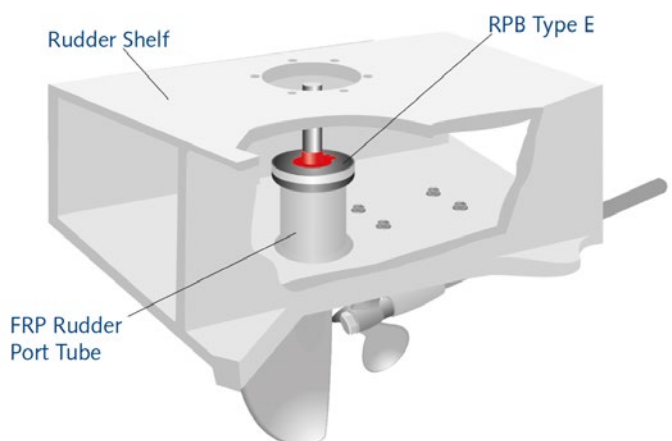
The Tides Marine RPB Type E unit is designed to be installed in rudder tubes which have been laminated or welded into a vessel's hull.

The unit consists of a one-piece UHMW housing with a nitrile lip seal. It eliminates metal-to-metal contact and the associated problems of abrasion, electrolysis and corrosion. It is 100% watertight and eliminates chatter and vibration, resulting in a quieter, smoother operation.

### Installation Overview

1. Prepare the rudder tube for bonding by wiping the inside clean of any dust or construction debris.
2. Using a medium bodied epoxy or Chockfast®, coat the outside of the bearing unit that will be pressed into the tube.
3. Lay a bead of marine sealant (such as Lifecaulk™ or 3-M™ 101) under the flange.
4. Insert the unit into the tube.
5. Temporary support may be required to keep the unit in position. Install rudder or dummy shaft to insure good bearing alignment until cured.

NOTE: Before installing the rudder, insert the red installation hat into the lip seal. When rudder is in place, remove, invert and replace it on top of the Type-E unit to keep debris off the lip seal during use.

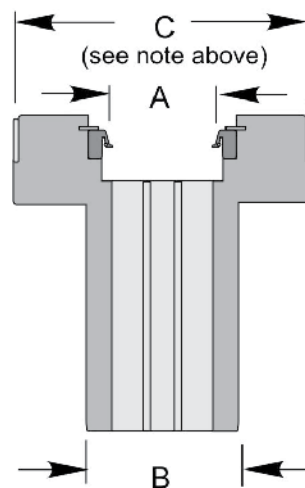
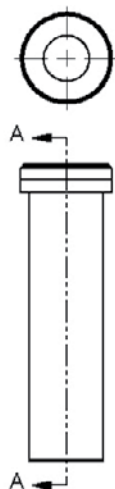
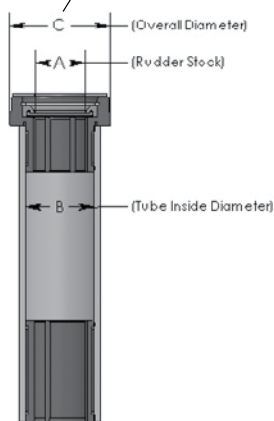
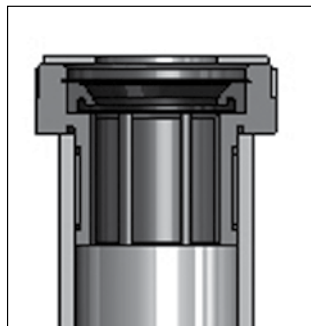
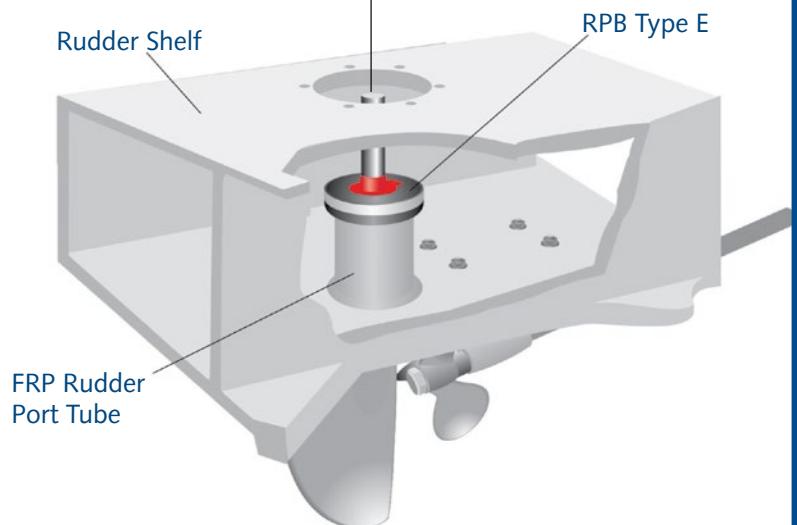
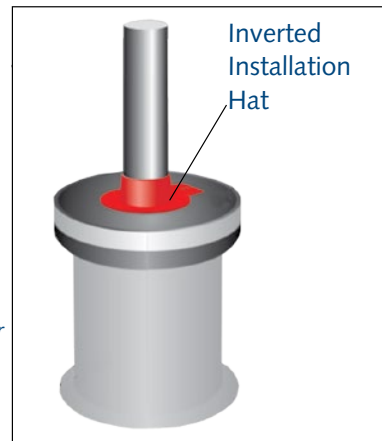


**TIDESMARINE**

## Rudder Port Bearings with Seals – TYPE E

Tides Marine makes Type E assemblies based upon a combination of rudder stock diameter (.000") and the rudder tube I.D. When placing your order, please provide both of these dimensions.

*If space is available, the red "hat" installation tool can be inverted and rested on top of the rudder bearing to help protect the lip seal from debris.*



**Design Note:**  
Diameter "C" must be at least equal to the rudder stock diameter plus 1 1/2".  
Diameter "B" must be at least equal to the rudder stock diameter plus 3/4".



GENERAL  
*Marine*  
SERVICES

156 Beaumont Street · Westhaven · Auckland · New Zealand

Sales Ph +64 9 309 0048 · sales@generalmarine.co.nz

Service Ph +64 9 368 0938 · service@generalmarine.co.nz

[www.generalmarine.co.nz](http://www.generalmarine.co.nz)