



## Cooling water strainer model 1320

### Introduction

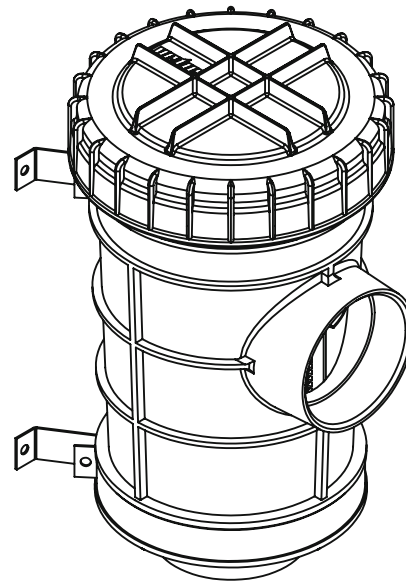
The Vetus cooling water strainer model 1320 is equipped with a transparent lid, so inspection can be carried out without opening the strainer. Due to the large active surface the strainer seldom needs to be cleaned.

In a standard installation situation (see 'Installation examples', drawing 1) the capacity is as per table below, the capacity depends on the diameter of the hose connection.

### Parallel connection

By connection of 2 water strainers in parallel (see 'Installation examples', drawing 2) a larger capacity can be obtained.

By connection of 2 water strainers in parallel with the use of 2 extra valves it is possible to clean each filter separately while the engine is running.



### Installation

- Install the water strainer always above the waterline. Use the brackets to mount the strainer against a vertical bulkhead.
- Install always a sea-cock on the water inlet scoop!
- Install the water strainer with the inlet by means of hose pillar and a flexible hose, see drawing 1.
- To prevent damage to the housing it is not allowed to use a stand-pipe or a hose pillar with tapered threa. Also a too large screw-in length of the thread may damage the housing or the flanges.
- Use a teflon tape as sealant for the connections.
- To connect the strainer to the engine always a hose pillar and a flexible hose should be used.
- Use only water and/or soap to ease fitting the hoses to the hose pillars and never products containing grease or oil. Fit each hose connection with 2 stainless steel hose clamps.

- Flush both parts of the strainer with clean water. Connect the parts before the strainer element is re-installed.
- Re-install the strainer element, grease the O-ring and the thread with silicone oil or teflon based spray, and re-install the lid. Secure or loosen the lid always manually. Never use tools for this purpose.
- Check the seal between lid and housing after cleaning and re-assembling the strainer. An improperly sealed lid will result in air sucked in by the sea water pump of the engine which again will result in overheating of the engine.
- To prevent damage of the water strainer, during frost in the winter time, either the water must be drained or the installation must be filled with anti-freeze.
- Remove the hoses to drain the strainer; the housing is not equipped with a drain plug.

### Use and maintenance

- Inspect the strainer element regularly for contaminants. NB. The lid doesn't need to be removed for inspection.
- Clean the strainer element if dirt has accumulated.

**Take care that during filling with anti-freeze no anti-freeze is spilled into the waterway. Anti-freeze is poisonous!**

### Cleaning

- Close the seacock before unscrewing the lid of the water strainer.
- Remove the strainer element out of the housing. The strainer element consists of two detachable parts so as to ensure proper cleaning.

### Technical data

Model:	1320
Material housing:	Polypropylene GF
Material strainer element:	Polypropylene
Material lid:	ABS
Weight:	1.4 kg (3 lbs)
Max. ambient temperature:	75°C (167°F)
Max. water temperature:	55°C (131°F)
Max. pressure:	0.5 bar (50 kPa, 7 psi)

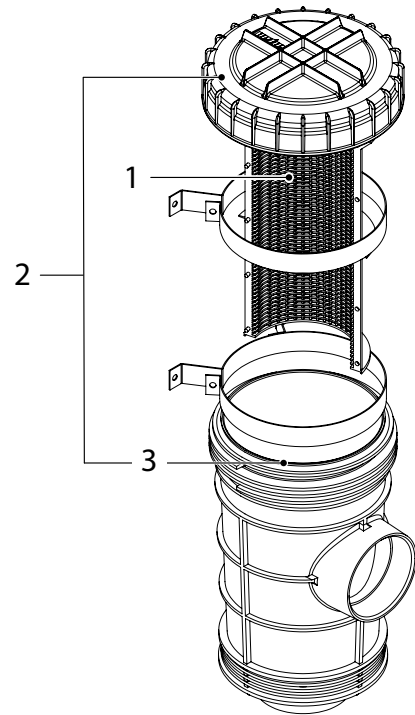
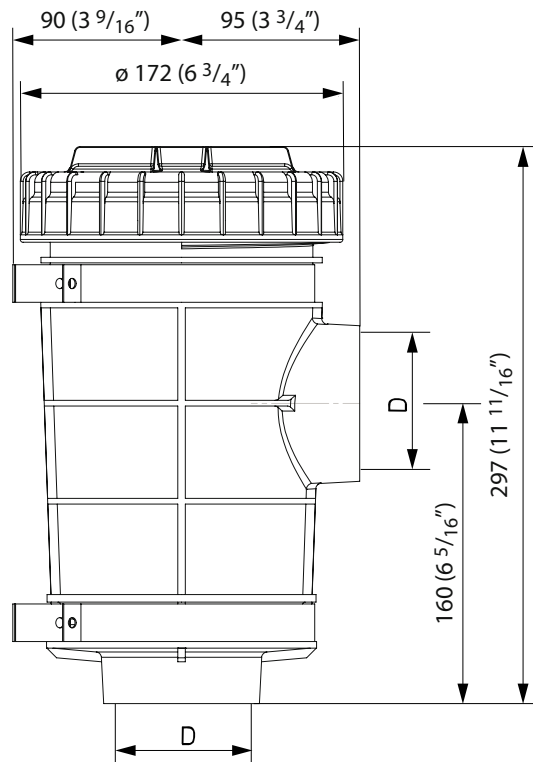
Model	Connection 'D'	Hose connection	Recommended capacity in normal use		
			l/min	Imp.Gal/min	US Gal/min
1302038	G 1.5	38 mm (1½")	205	45	54
1302050	G 2	50 mm (1¾")	365	80	96
1302063	G 2.5	63 mm (2½")	570	125	151





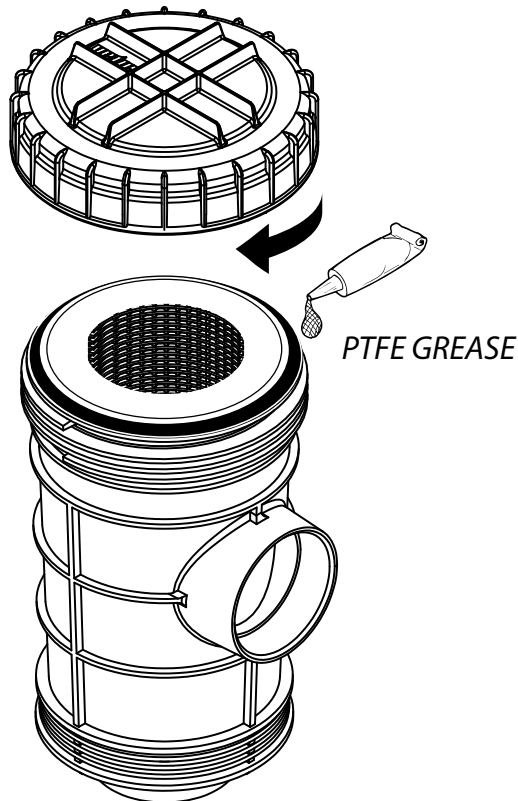
## Cooling water strainer model 1320

Overall dimensions



### Service parts

POS.	QTY	PART	DESCRIPTION
1	1	SET0187	Strainer in two pieces
2	1	FTR13201	Set: cover and o-ring
3	1	FTR13202	Set: o-ring (5x)



GENERAL  
*Marine*  
SERVICES

156 Beaumont Street · Westhaven · Auckland · New Zealand

Sales Ph +64 9 309 0048 · sales@generalmarine.co.nz

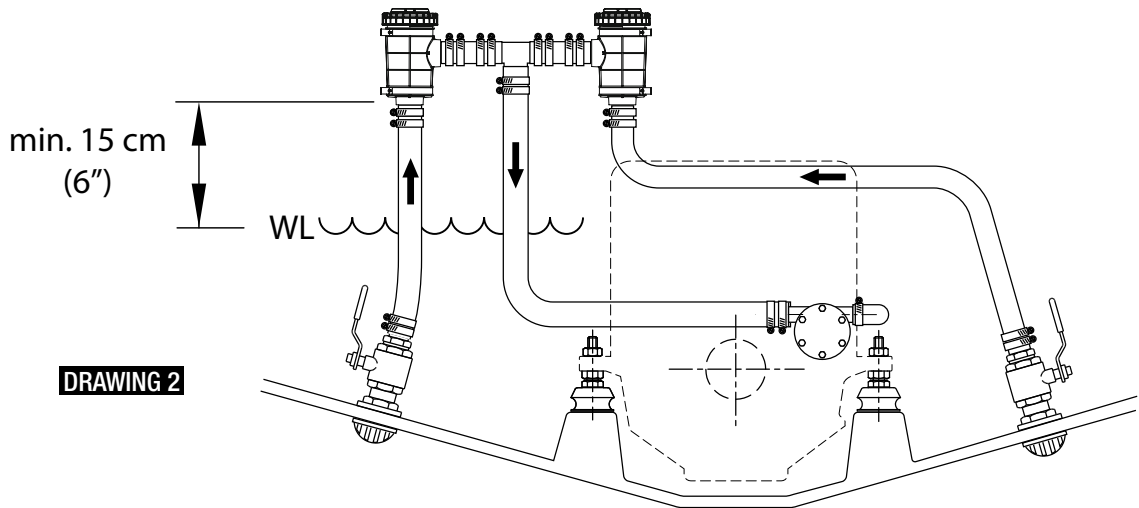
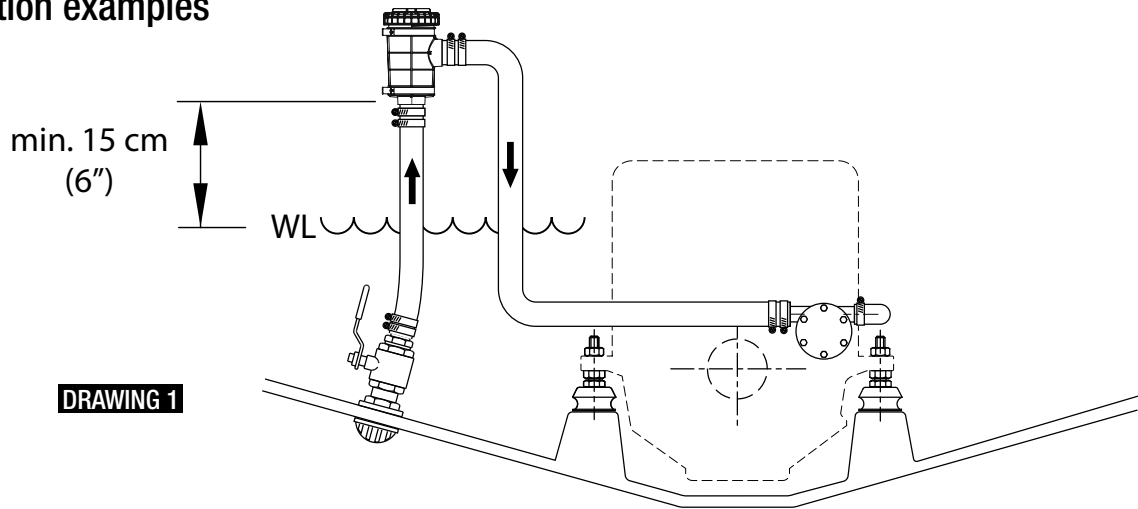
Service Ph +64 9 368 0938 · service@generalmarine.co.nz

[www.generalmarine.co.nz](http://www.generalmarine.co.nz)

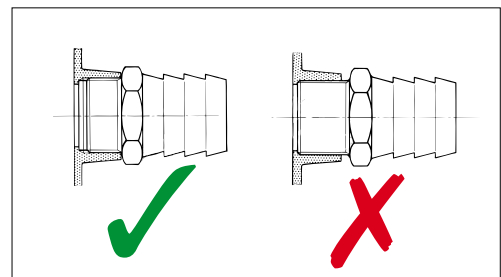
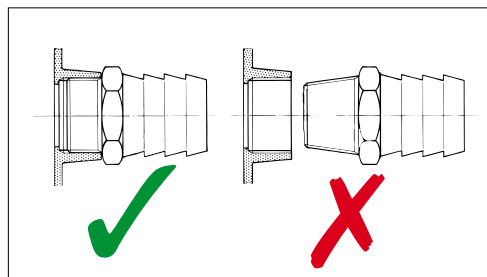


## Cooling water strainer model 1320

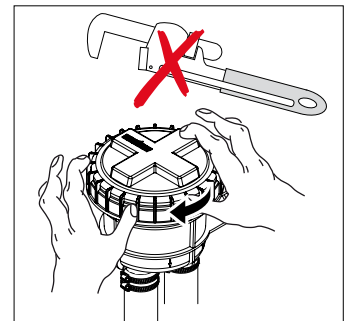
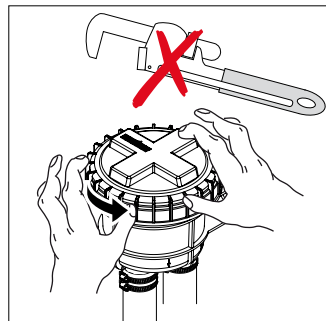
### Installation examples



### Use and maintenance



**DO NOT OVER TIGHTEN**



GENERAL  
*Marine*  
SERVICES

156 Beaumont Street · Westhaven · Auckland · New Zealand

Sales Ph +64 9 309 0048 · sales@generalmarine.co.nz

Service Ph +64 9 368 0938 · service@generalmarine.co.nz

[www.generalmarine.co.nz](http://www.generalmarine.co.nz)