



Cooling water strainer model 330

Introduction

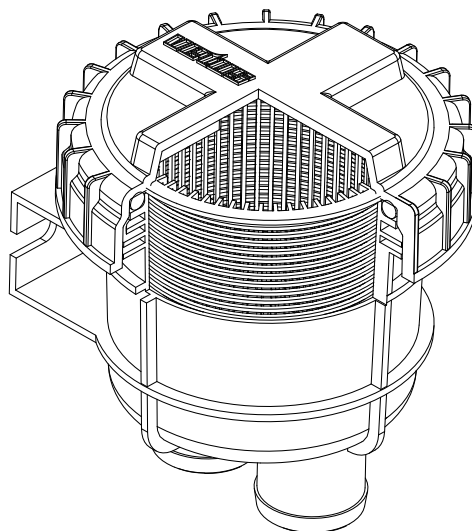
The Vetus cooling water strainers model 330 are equipped with a transparent lid, so inspection can be carried out without opening of the strainer. Due to the large active surface the strainer seldom needs to be cleaned.

In a standard installation situation (see 'Installation examples', drawing 1) the capacity is as per technical data, the capacity depends of the diameter of the hose connection.

Parallel connection

By connection of 2 water strainers in parallel (see 'Installation examples, drawing 2) a larger capacity can be obtained.

By connection of 2 water strainers in parallel with the use of 2 extra valves (see 'Installation examples, drawing 3) it is possible, while the engine is running, to clean each filter separately.



Installation

- Install the water strainer always above the waterline. Mount the strainer against a vertical bulkhead.
- Always install a sea-cock on the water inlet scoop!
- For both connections, water scoop to strainer and strainer to engine, always use flexible hose.
- Use only water and/or soap to ease fitting of the hoses to the hose pillars and never products containing grease or oil.
- Fit each hose connection with 2 stainless steel hose clamps.

Use and maintenance

- Inspect the strainer element regularly for contaminants. NB. The lid doesn't need to be removed for inspection.
- Clean the strainer element if dirt has accumulated. Close the seacock before unscrewing the lid of the water strainer, see drawing 4.
- Remove the strainer element out of the housing and flush the strainer with clean water.
- Re-install the strainer element, grease the O-ring and the thread with silicone oil or teflon based spray, see drawing 9, and reinstall the lid. NB. Always secure or loosen the lid manually. Never use tools for this purpose.

- Check the seal between lid and housing after cleaning and re-assembling the strainer. An improperly sealed lid will result in air sucked in by the sea water pump of the engine which again will result in overheating of the engine.
- To prevent damage of the water strainer, during frost in the winter time, either the water must be drained or the installation must be filled with anti-freeze.
- Remove the hoses to drain the strainer; the housing is not equipped with a drain plug.

Take care that during filling with anti-freeze no anti-freeze is spilled into the waterway. Anti-freeze is poisonous.

Technical data

Material housing:	Polypropylene GF
Material strainer element:	HD Polyethylene
Material lid:	Styrol/Acrylonitrile SAN
Weight:	0.45 kg (1 lb)
Max. ambient temperature:	75 °C (167 °F)
Max. water temperature:	55 °C (131 °F)
Max. pressure:	0.5 bar (50 kPa, 7 psi)

Model	Hose connection	Maximum capacity			Recommended capacity in normal use		
		l/min	Imp.Gal/min	US Gal/min	l/min	Imp.Gal/min	US Gal/min
FTR330/13	13 mm (½")	50	11	13	23	5	6
FTR330/16	16 mm (⅝")	80	18	21	35	8	9
FTR330/19	19 mm (¾")	120	26	32	51	11	13
FTR330/25	25 mm (1")	210	46	55	91	20	24
FTR330/32	32 mm (1¼")	330	73	87	143	31	38
FTR330/38	38 mm (1½")	470	103	124	200	44	53



GENERAL
Marine
SERVICES

156 Beaumont Street · Westhaven · Auckland · New Zealand

Sales Ph +64 9 309 0048 · sales@generalmarine.co.nz

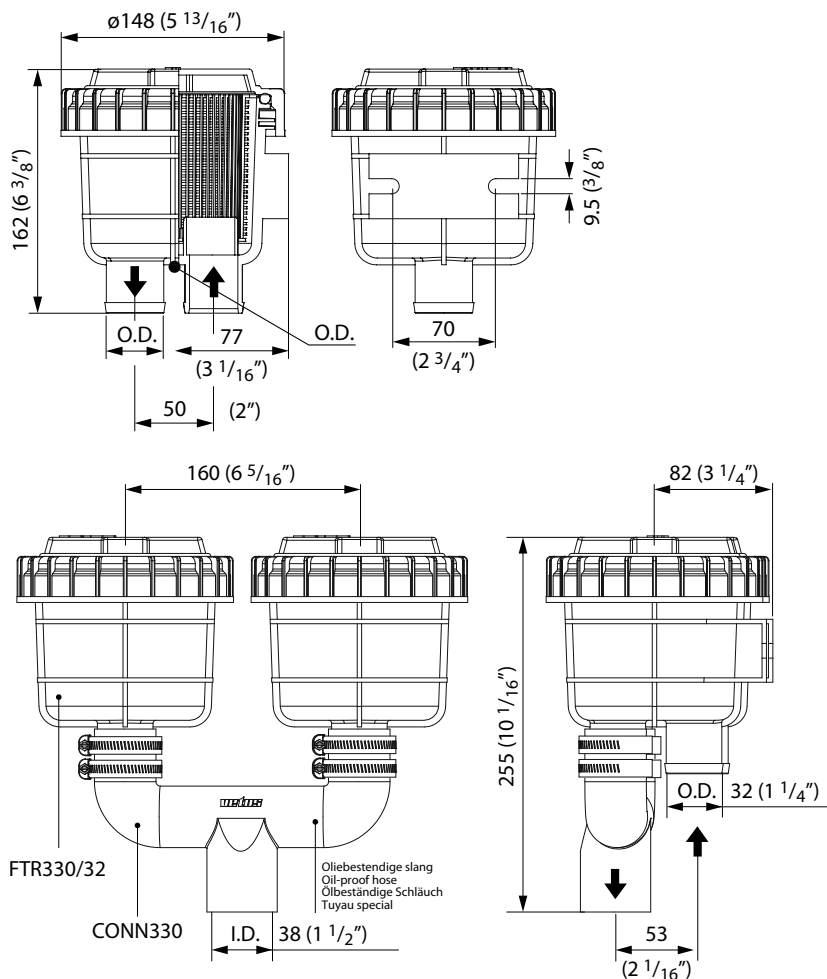
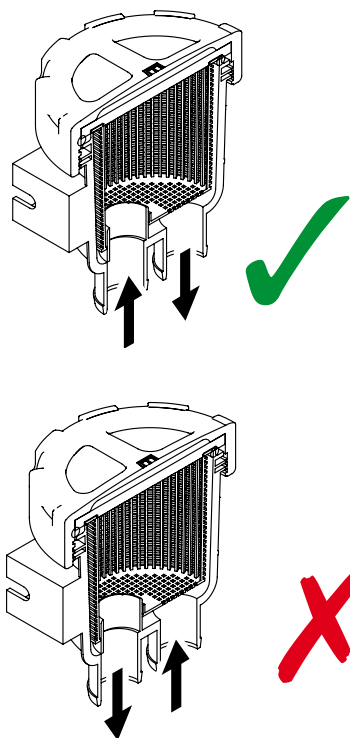
Service Ph +64 9 368 0938 · service@generalmarine.co.nz

www.generalmarine.co.nz

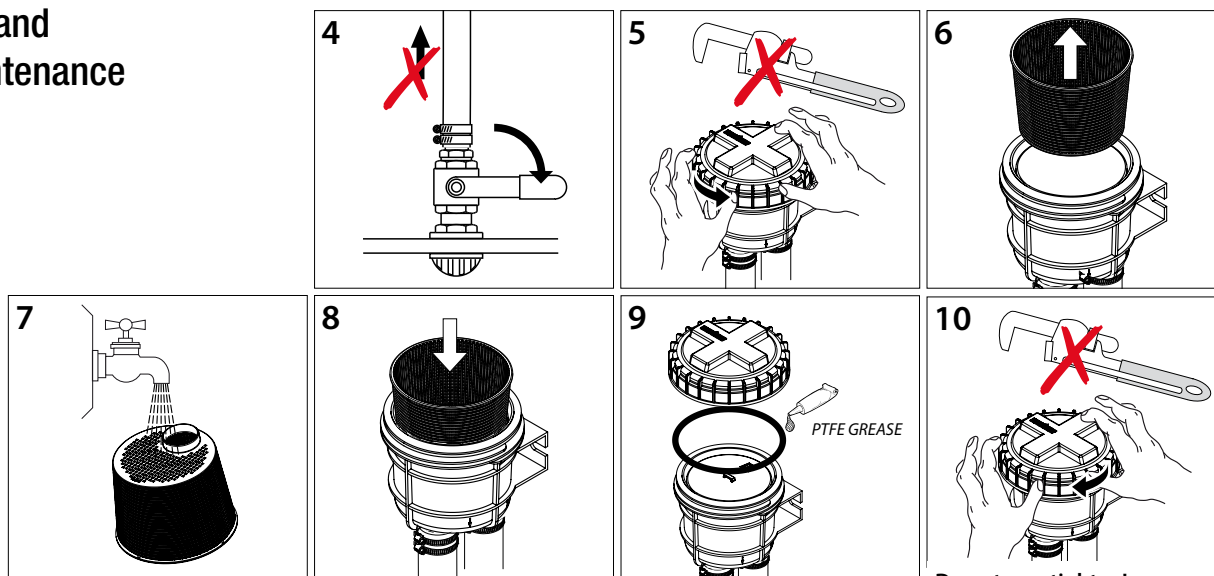


Cooling water strainer model 330

Overall dimensions



Use and maintenance



Do not overtighten!



GENERAL
Marine
SERVICES

156 Beaumont Street • Westhaven • Auckland • New Zealand
Sales Ph +64 9 309 0048 • sales@generalmarine.co.nz
Service Ph +64 9 368 0938 • service@generalmarine.co.nz

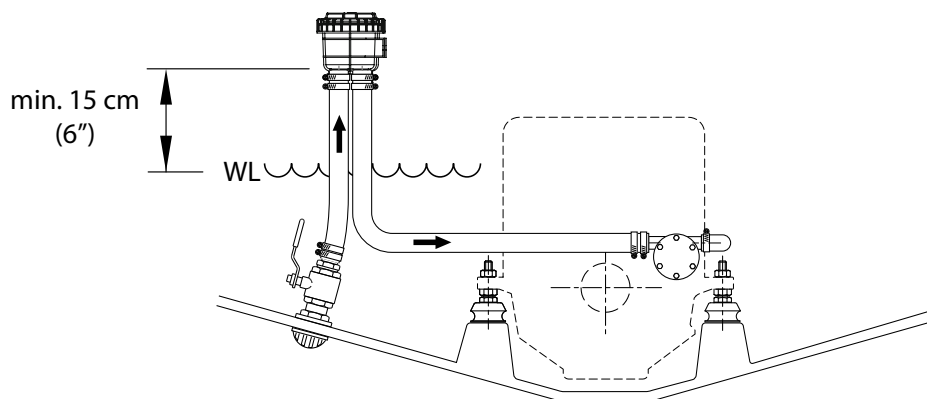
www.generalmarine.co.nz



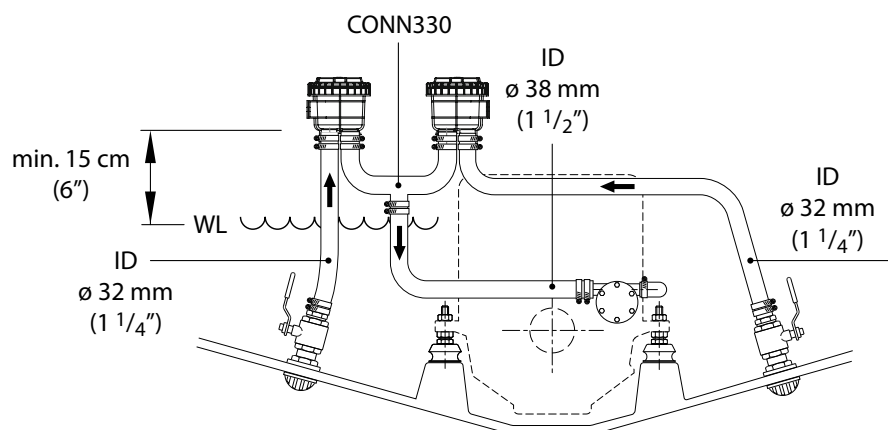
Cooling water strainer model 330

Installation examples

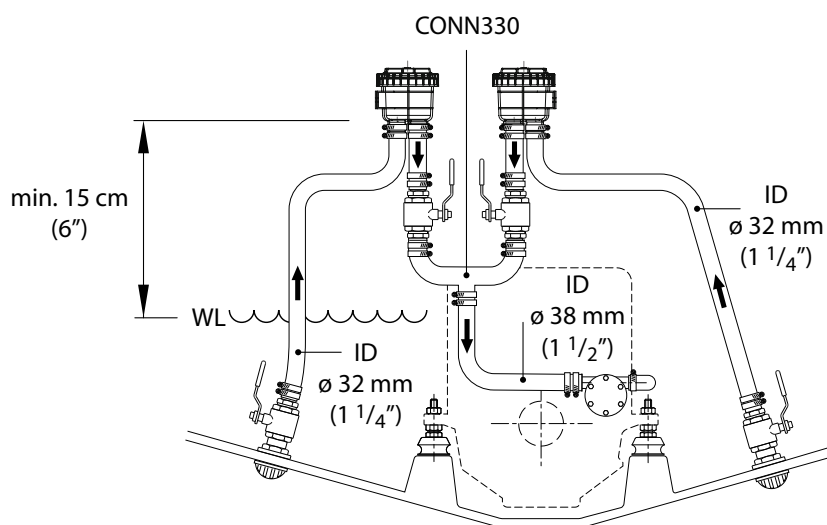
1



2



3



GENERAL
Marine
SERVICES

156 Beaumont Street · Westhaven · Auckland · New Zealand

Sales Ph +64 9 309 0048 · sales@generalmarine.co.nz

Service Ph +64 9 368 0938 · service@generalmarine.co.nz

www.generalmarine.co.nz