



Cooling water strainer model 330M

Introduction

The Vetus cooling water strainers model 330 are equipped with a transparent lid, so inspection can be carried out without opening the strainer. Due to the large active surface the strainer seldom needs to be cleaned.

In a standard installation situation (see 'Installation examples', drawing 1) the capacity is as per technical data, the capacity depends of the diameter of the hose connection.

Parallel connection

By connection of 2 water strainers in parallel (see 'Installation examples, drawing 2) a larger capacity can be obtained.

By connection of 2 water strainers in parallel with the use of 2 extra valves (see 'Installation examples, drawing 3) it is possible, while the engine is running, to clean each filter separately.

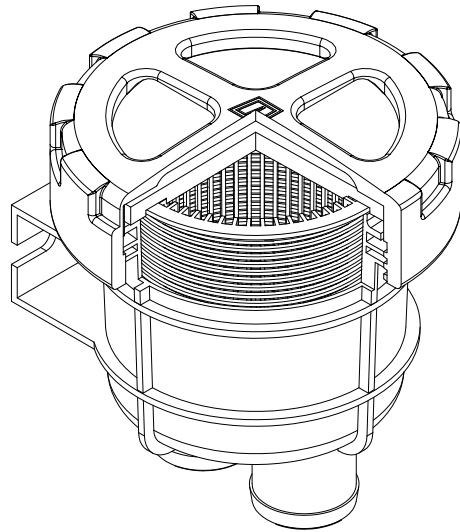
Installation

- Install the water strainer always above the waterline. Mount the strainer against a vertical bulkhead.
- Always install a sea-cock on the water inlet scoop!
- Use for both connections, water scoop to strainer and strainer to engine, always flexible hose.
- Use only water and/or soap to ease fitting the hoses to the hose pillars and never products containing grease or oil.
- Fit each hose connection with 2 stainless steel hose clamps.

Use and maintenance

- Inspect the strainer element regularly for contaminants. NB. The lid doesn't need to be removed for inspection.
- Clean the strainer element if dirt has accumulated. Close the seacock before unscrewing the lid of the water strainer, see drawing 4.
- Remove the strainer element out of the housing and flush the strainer with clean water.
- Re-install the strainer element, grease the O-ring and the thread with silicone oil or teflon based spray, see drawing 9, and reinstall the lid. NB. Secure or loosen the lid always manually. Never use tools for this purpose.
- Check the seal between lid and housing after cleaning and re-assembling the strainer. An improperly sealed lid will result in air sucked in by the sea water pump of the engine which again will result in overheating of the engine.
- To prevent damage of the water strainer, during frost in the winter time, either the water must be drained or the installation must be filled with anti-freeze.
- Remove the hoses to drain the strainer; the housing is not equipped with a drain plug.

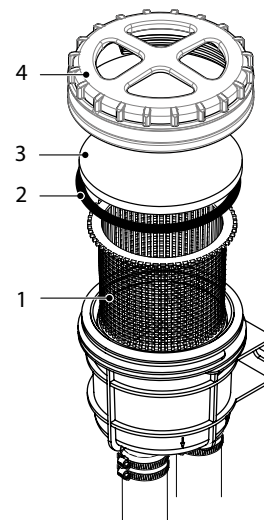
Take care that during filling with anti-freeze no anti-freeze is spilled into the waterway. Anti-freeze is poisonous.



Technical data

Material housing:	Navidurin® (PA66-GF30)
Material strainer element:	HD Polyethylene
Material lid:	Aluminium + Polycarbonate
Weight:	1.5 kg (3.3 lb)
Max. ambient temperature:	75 °C (167 °F)
Max. water temperature:	55 °C (131 °F)
Max. pressure:	8 bar (800 kPa, 116 psi)

Hose connection	Recommended capacity in normal use		
	l/min	Imp.Gal/min	US Gal/min
38 mm (1½")	200	44	53



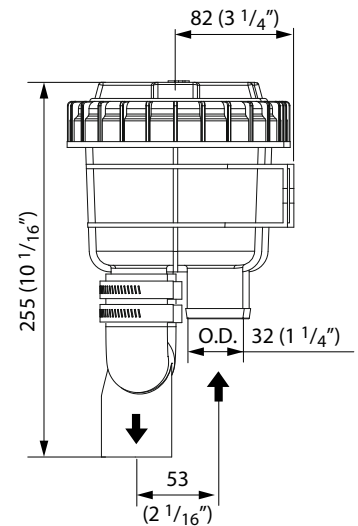
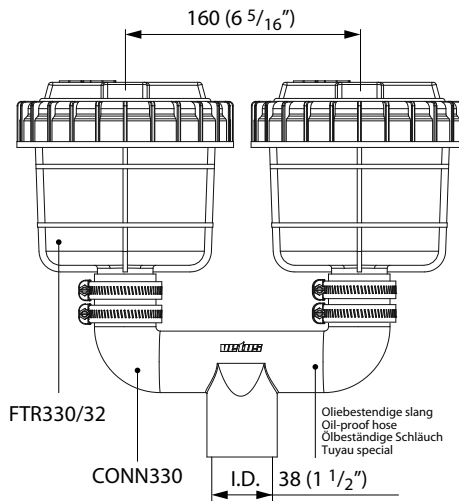
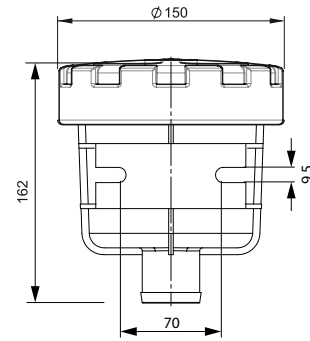
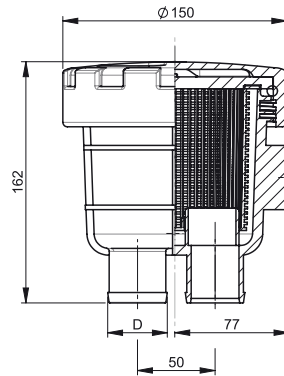
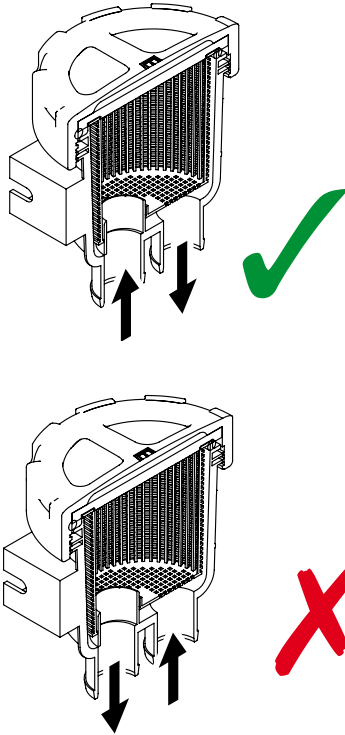
pos.	qty	part	
1	1	FTR05	Strainer
2	1	FTR3302	Set: o-ring (5x)
3	1	FTR330M02	Inner cover
4	1	FTR330M01	Cover





Cooling water strainer model 330M

Overall dimensions

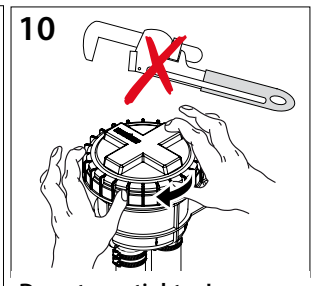
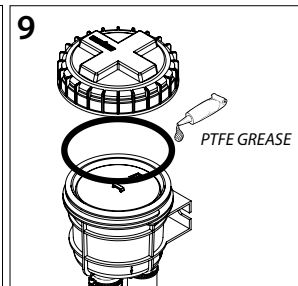
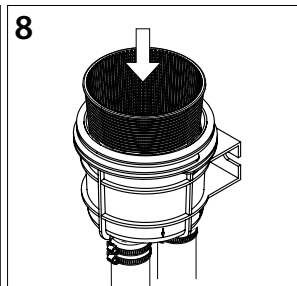
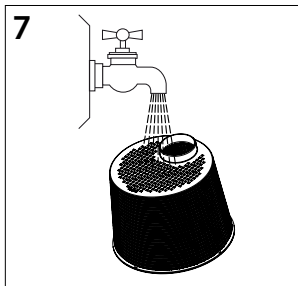
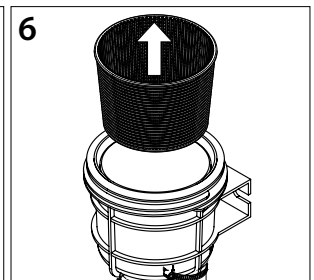
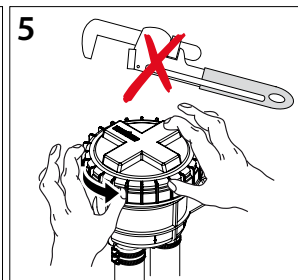
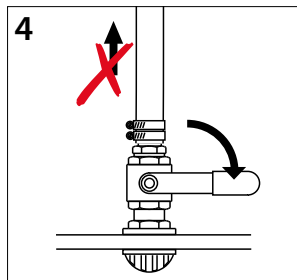


FTR330/32

CONN330

Ölbeständige slang
Oil-proof hose
Ölbeständige Schläuch
Tuyau special

Use and maintenance



Do not overtighten!



GENERAL
Marine
SERVICES

156 Beaumont Street · Westhaven · Auckland · New Zealand

Sales Ph +64 9 309 0048 · sales@generalmarine.co.nz

Service Ph +64 9 368 0938 · service@generalmarine.co.nz

www.generalmarine.co.nz



Cooling water strainer model 330M

Installation examples

